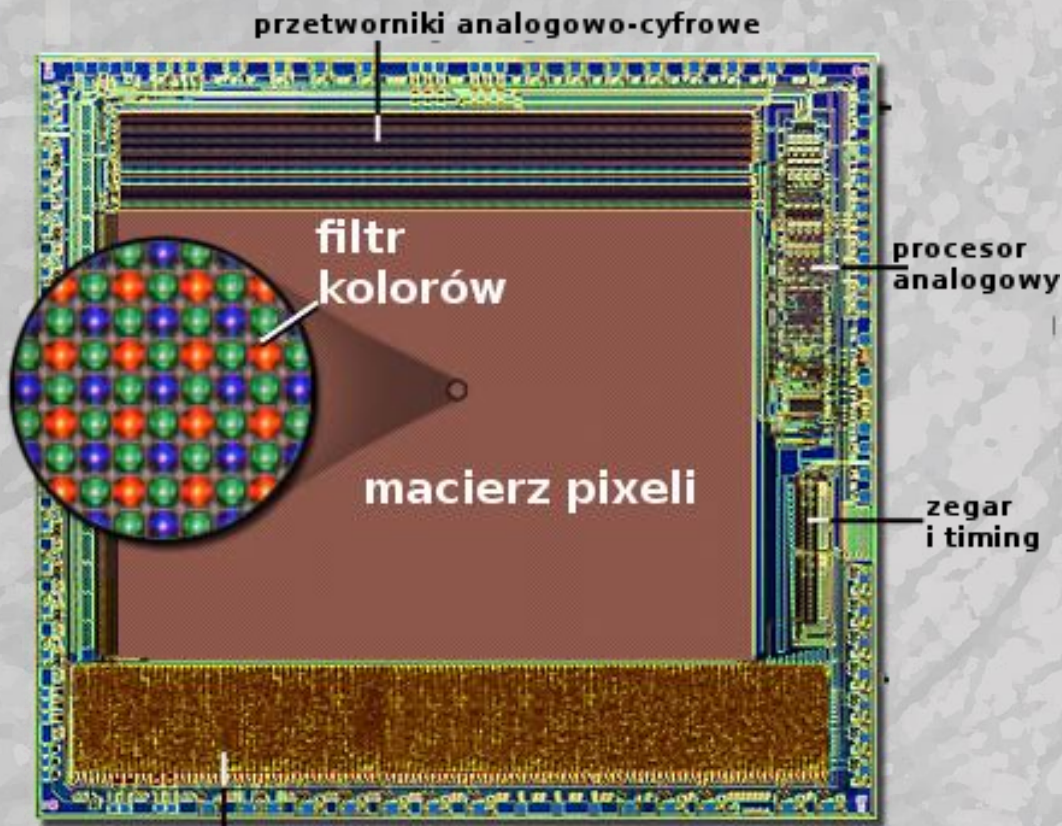


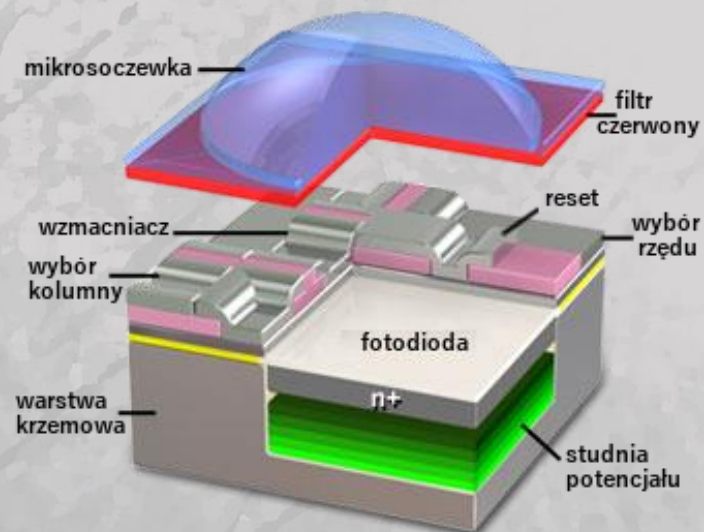
Rozkład kątów kierunków przychodzenia mionów obserwowanych w telefonach **CREDO**

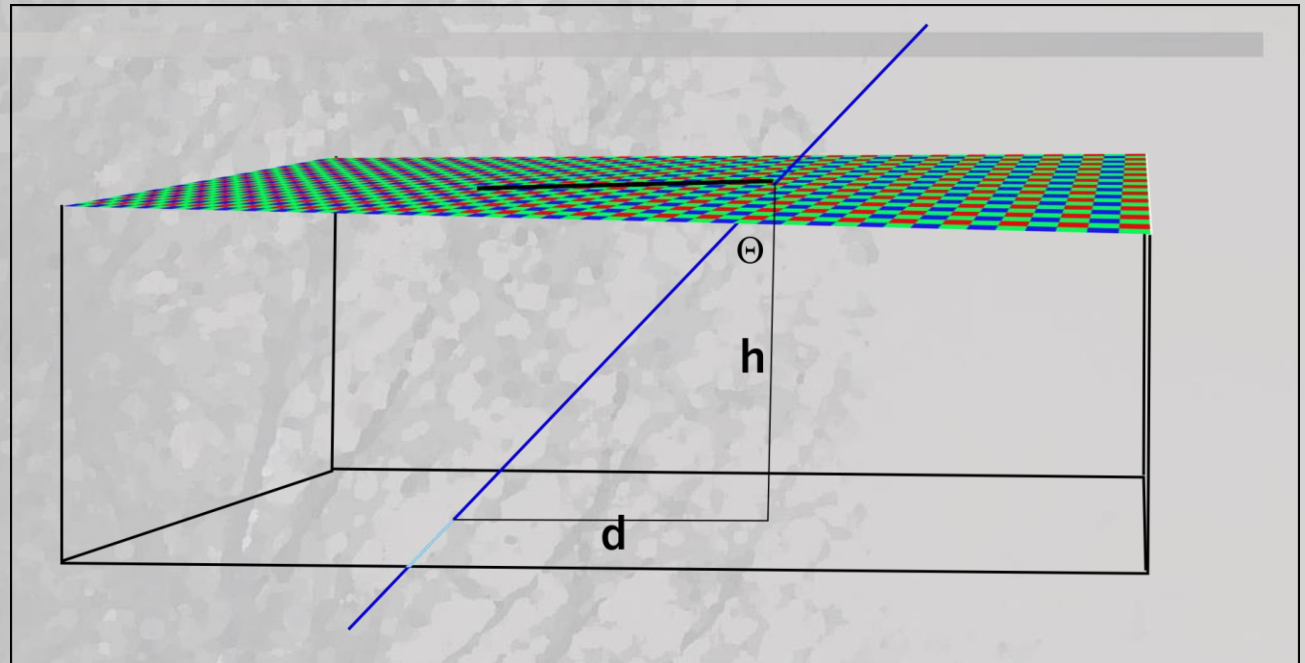
Tadeusz Wibig

Uniwersytet Łódzki
Wydział Fizyki i Informatyki Stosowanej
ul. Pomorska 149/153, 90-236 Łódź

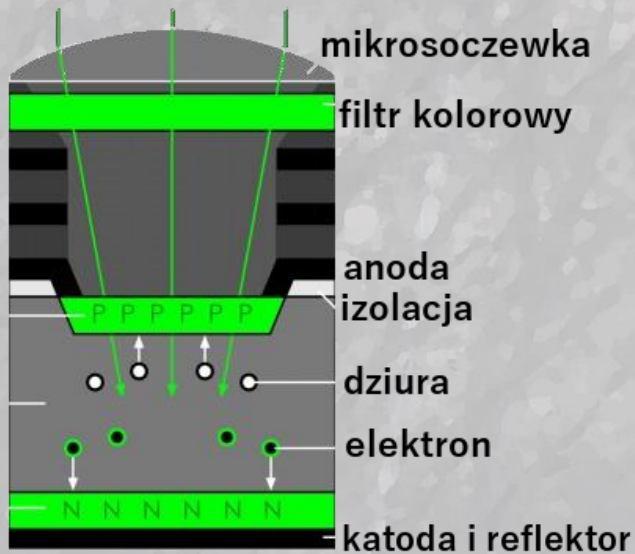


logika cyfrowa (interface, czas, przetwarzanie, wyjście)

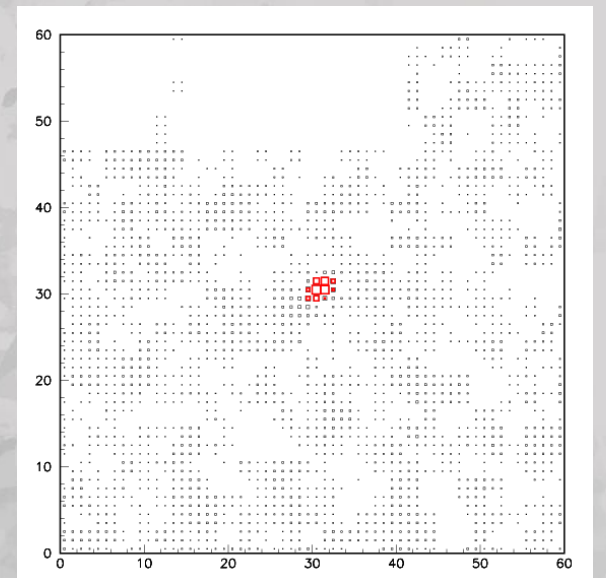
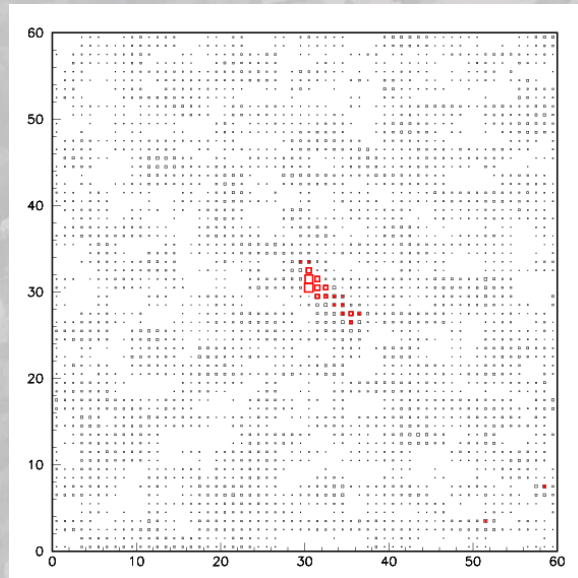
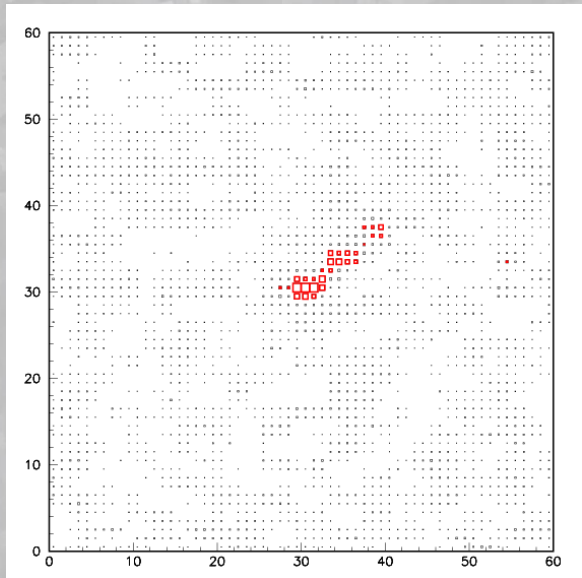
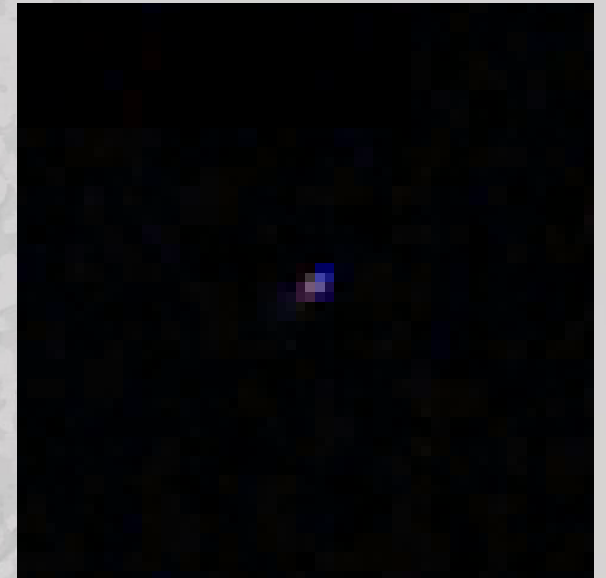


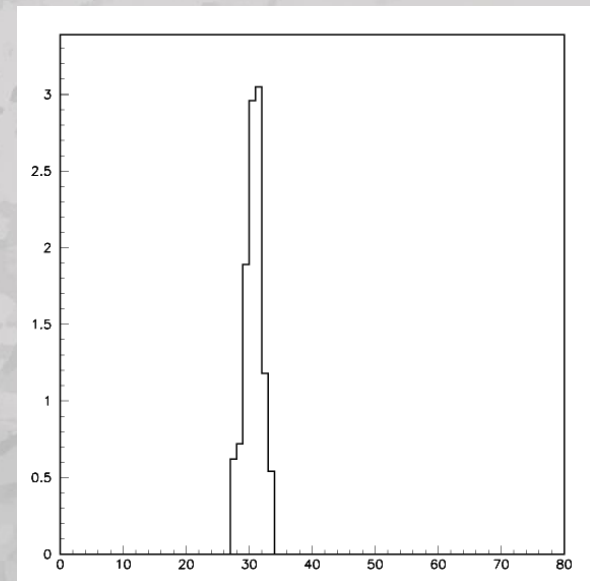
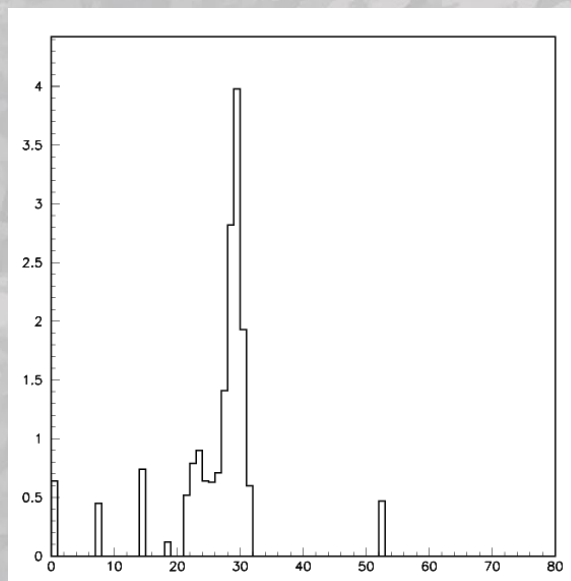
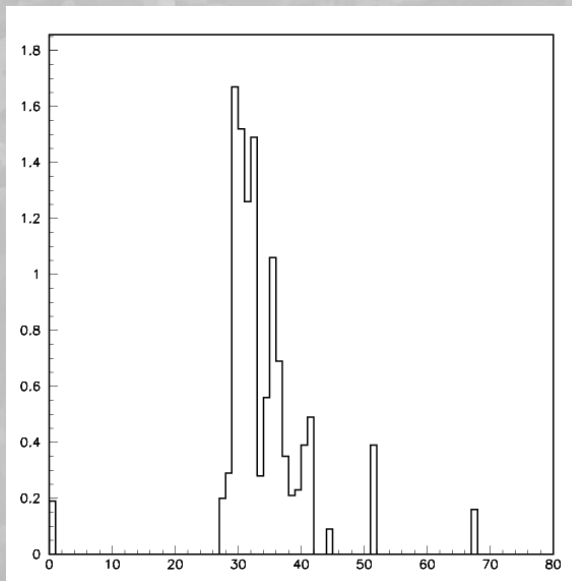
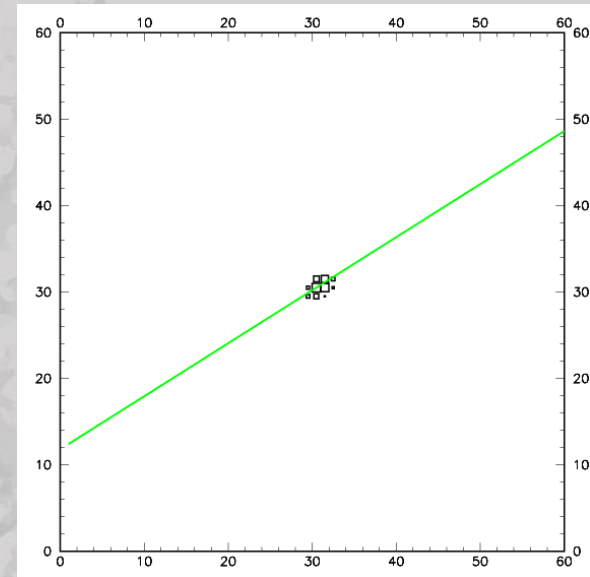
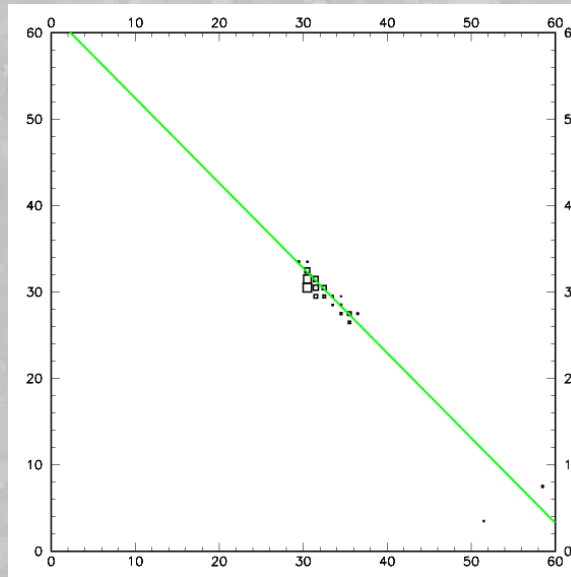
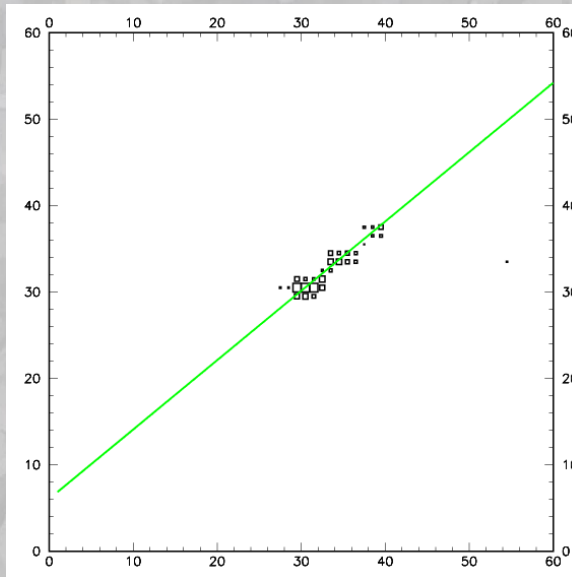


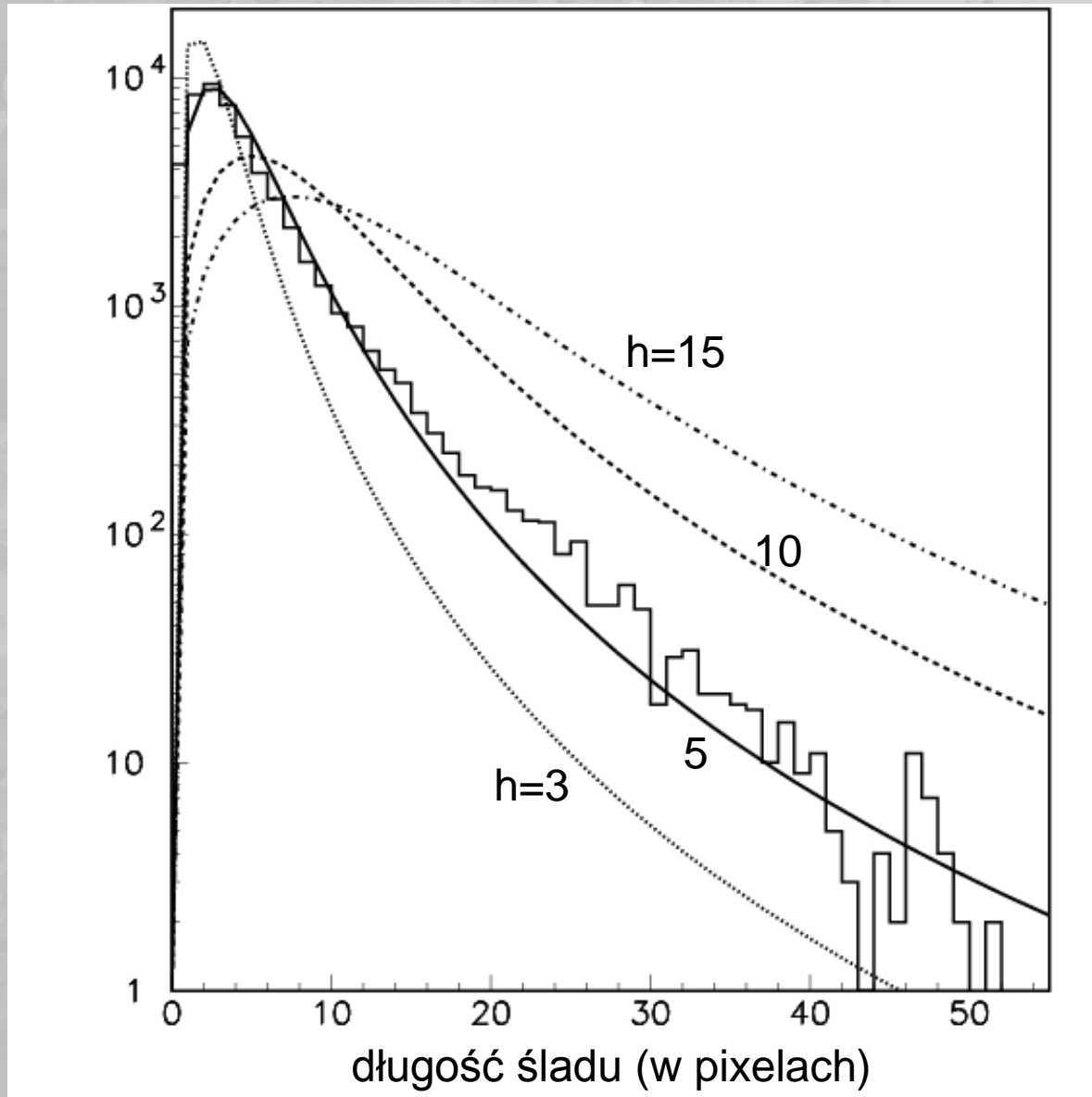
przychodzące fotony



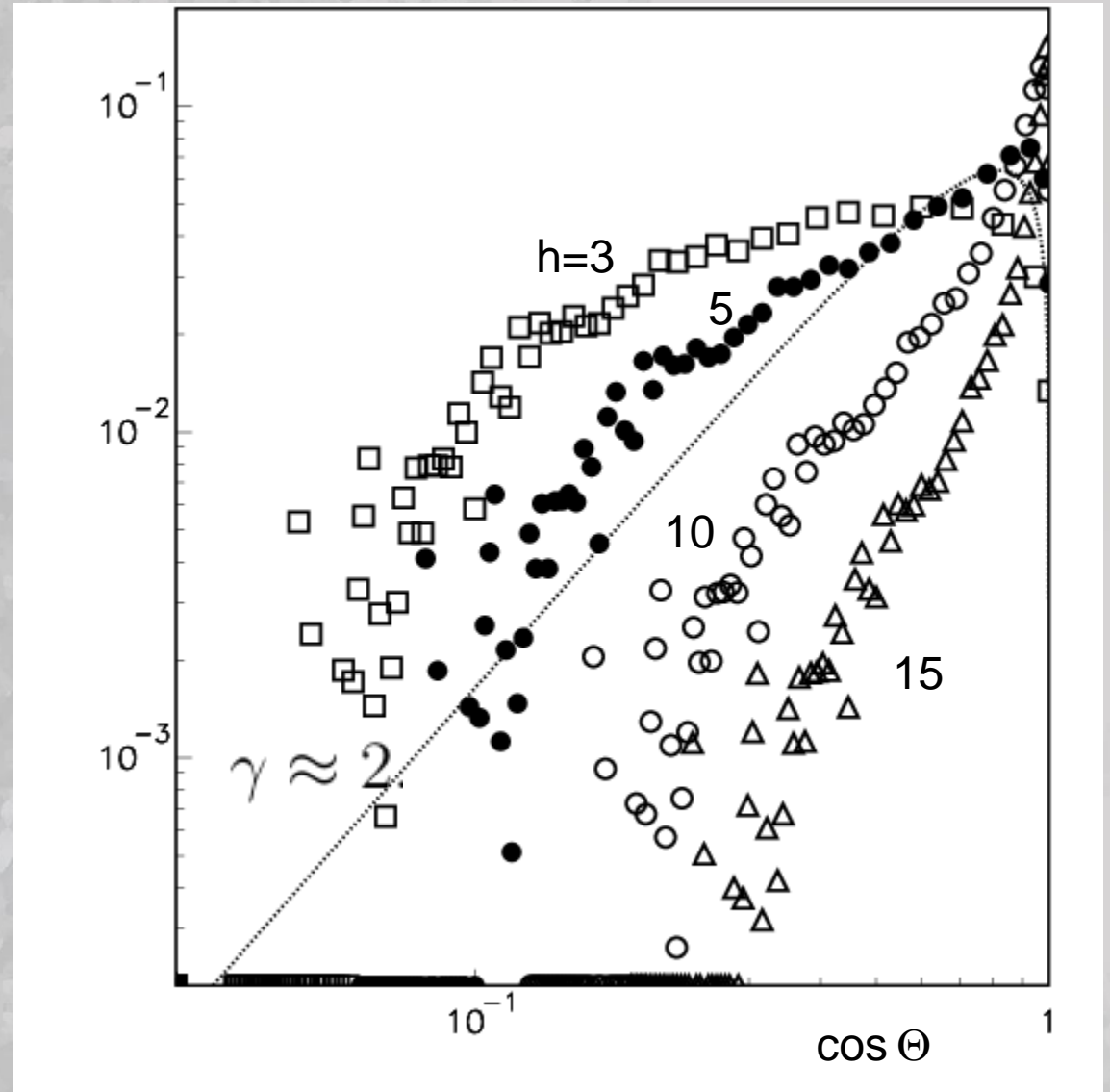
$$\Theta = \arctg \frac{d}{h}$$

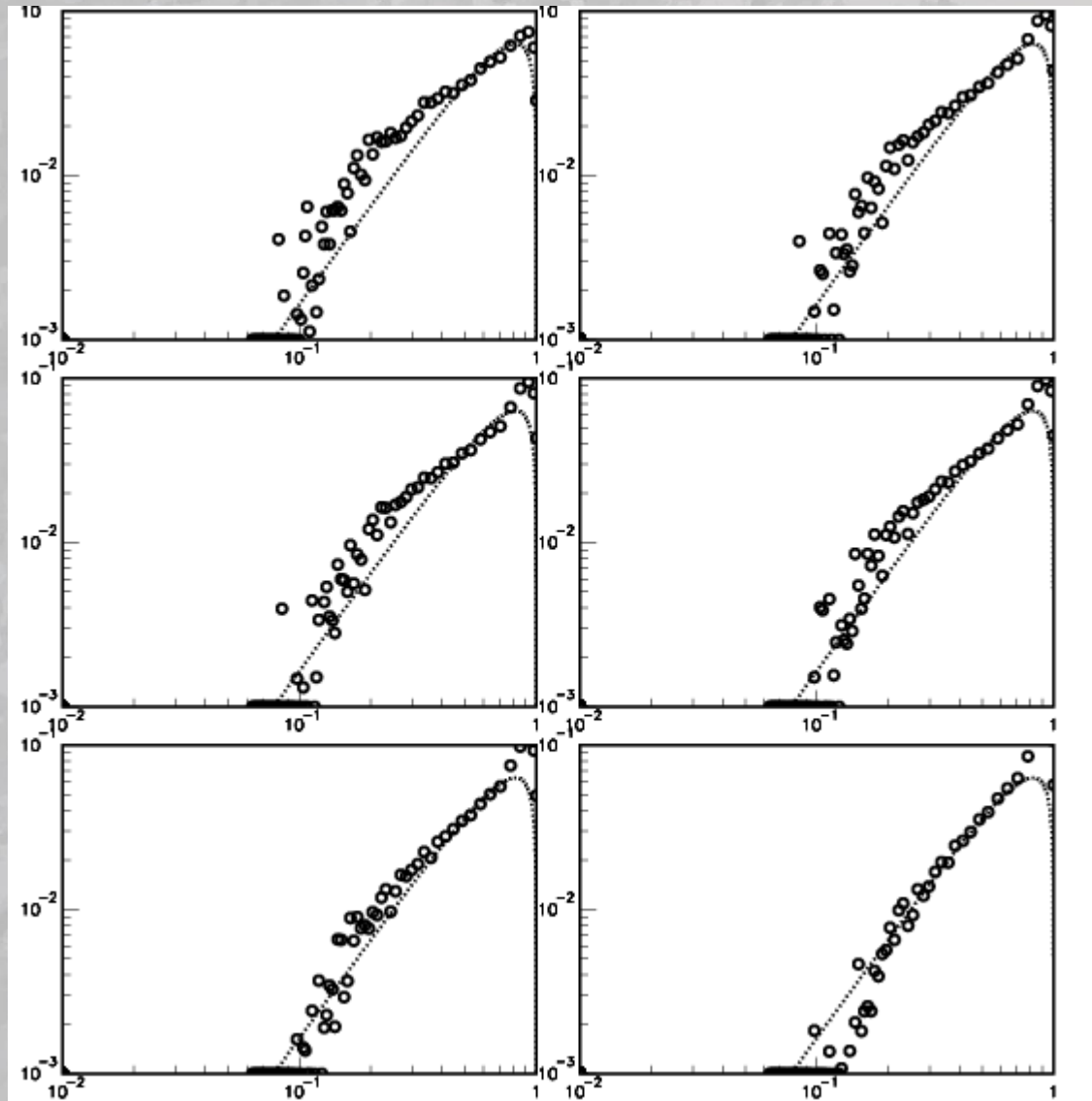






$$\frac{dN(\Theta)}{d\Theta} = \cos^\gamma(\Theta)$$





różne algorytmy wyznaczania długości śladu

